



Level 4/405/26 Whistler Street Manly NSW

2 🛏 2 🚿 1 🚗

Made up of just 41 spacious and contemporary apartments, Porteño is tucked away on Whistler Street, one of Manly's best-kept local secrets. Peppered with fabulous restaurants, hole-in-the-wall coffee shops and boutique stores makes it the perfect spot to embrace Manly's unique way of life.

Displaying superb high quality finishes throughout, this two bedroom apartment consist of luxury kitchen with caesarstone bench top and splash back, integrated Miele appliances, high ceilings, engineered timber flooring in living areas, wool carpets in the bedroom and blackout blinds, hotel quality bathrooms and internal laundry with Miele washing machine & dryer provided.

Other great features include large communal roof-top terrace with fabulous ocean and district views, security

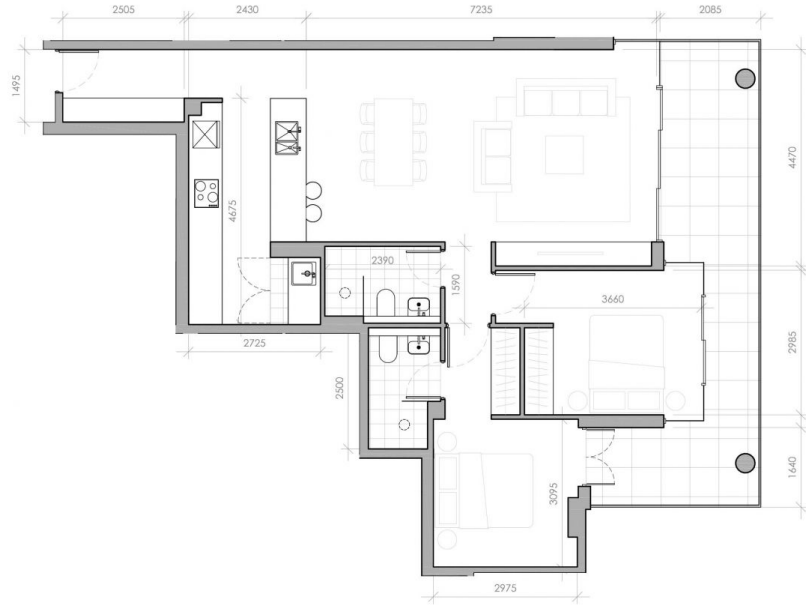
View : <https://www.redproperty.com.au/lease/nsw/northern-beaches/manly/residential/apartment/7905003>



Lauren Compton
02 9917 4406



Jordan Ashab
02 9917 4404



-  2X BEDROOM
-  2X BATHROOM
-  2X LIVING SPACES
-  TIMELESS DESIGN



Level. 04
 Abode. 405
 Internal. 85m²
 External. 18m²



Disclaimer.
 Plans are for marketing purposes only.

