



Level 4/402/26 Whistler Street Manly NSW

2 🛏 2 🚿 1 🚗

Made up of just 41 spacious and contemporary apartments, Porteño is tucked away on Whistler Street, one of Manly's best-kept local secrets. Peppered with fabulous restaurants, hole-in-the-wall coffee shops and boutique stores makes it the perfect spot to embrace Manly's unique way of life.

Displaying superb high quality finishes throughout, this two bedroom apartment spread over two levels consist of luxury kitchen with caesarstone bench top and splash back, integrated Miele appliances, high ceilings, engineered timber flooring in living areas, wool carpets in the bedroom and blackout blinds, hotel quality bathrooms including 3rd guest toilet and internal laundry with Miele washing machine & dryer provided. Two sunlit balconies enjoying district views makes this property unique.

View : <https://www.redproperty.com.au/lease/nsw/northern-beaches/manly/residential/apartment/7729657>



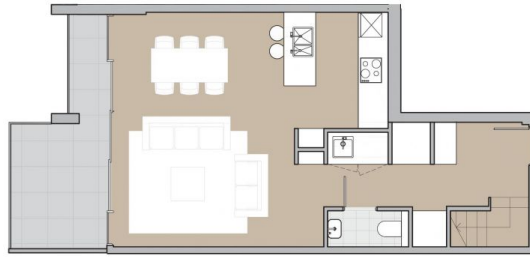
Lauren Compton
02 9917 4406



Jordan Ashab
02 9917 4404



-  2X BEDROOM
-  3X BATHROOM
-  3X LIVING SPACES
-  TIMELESS DESIGN



Level. 04
Abode. 402
Internal. 89m²
External. 13m²



North

Disclaimer.
Plans are for marketing purposes only.