



14/15 Osborne Road Manly NSW

1 1

Boasting a premier Eastern Hill position within 250m of East Esplanade Park and East Manly Cove Beach, this top floor apartment is the perfect pad for living the coveted Manly lifestyle. It's wrapped in 270-degrees of windows and basks in northerly sunshine while capturing harbour and ferry glimpses to the northwest and leafy district outlooks to the northeast. Peaceful and private, it embraces an open plan indoor/outdoor flow and is comfortable with scope to capitalise by adding your personal style and flair. Scramble parking is available onsite and bus stops are within footsteps. Swimming, sailing, surfing and sunbathing are all within a 10-minute stroll, as are the endless culinary and nightlife attractions of vibrant Manly.

Price : \$ 950,000

View : <https://www.redproperty.com.au/sale/nsw/northern-beaches/manly/residential/apartment/7681595>

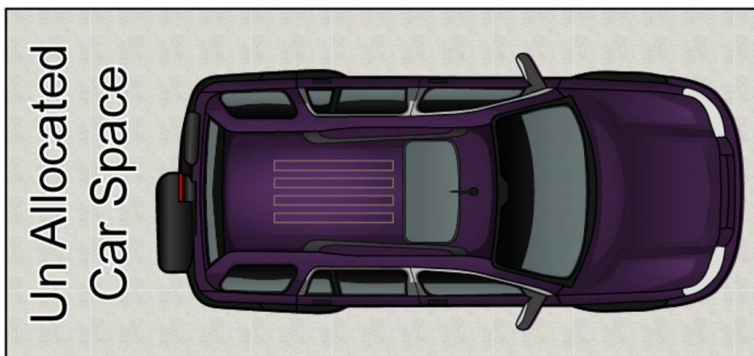
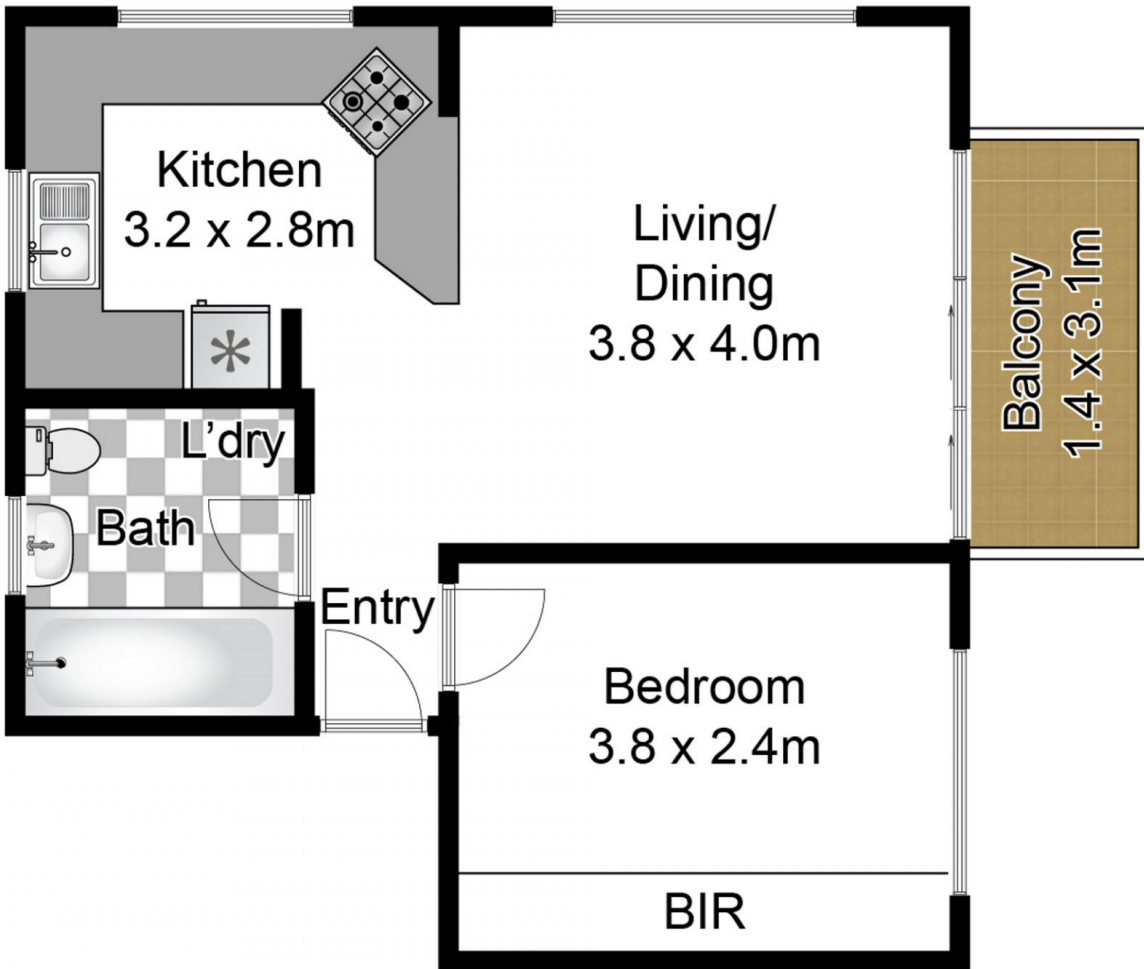


Ashley Miles
02 9977 3000



Alicia Ryan
02 9977 3000

- ? Roomy living/dining space with timber floors flows to balcony
- ? Open plan stone kitchen, sleek appliances and a



(Not In Position)

Whilst bwrn.com.au has made every attempt to ensure the accuracy of the floor plan contained here, measurements are approximate and no responsibility is taken for any error, omission, or mis-statement. This plan is for illustrative purposes only.

