



## 4 Belgrave Street Manly NSW

Just 100m to Manly Wharf with Parkland outlook and outdoor space.

This shop of approx. 80m<sup>2</sup> features a kitchenette and bathroom and a huge 6 metre window display.

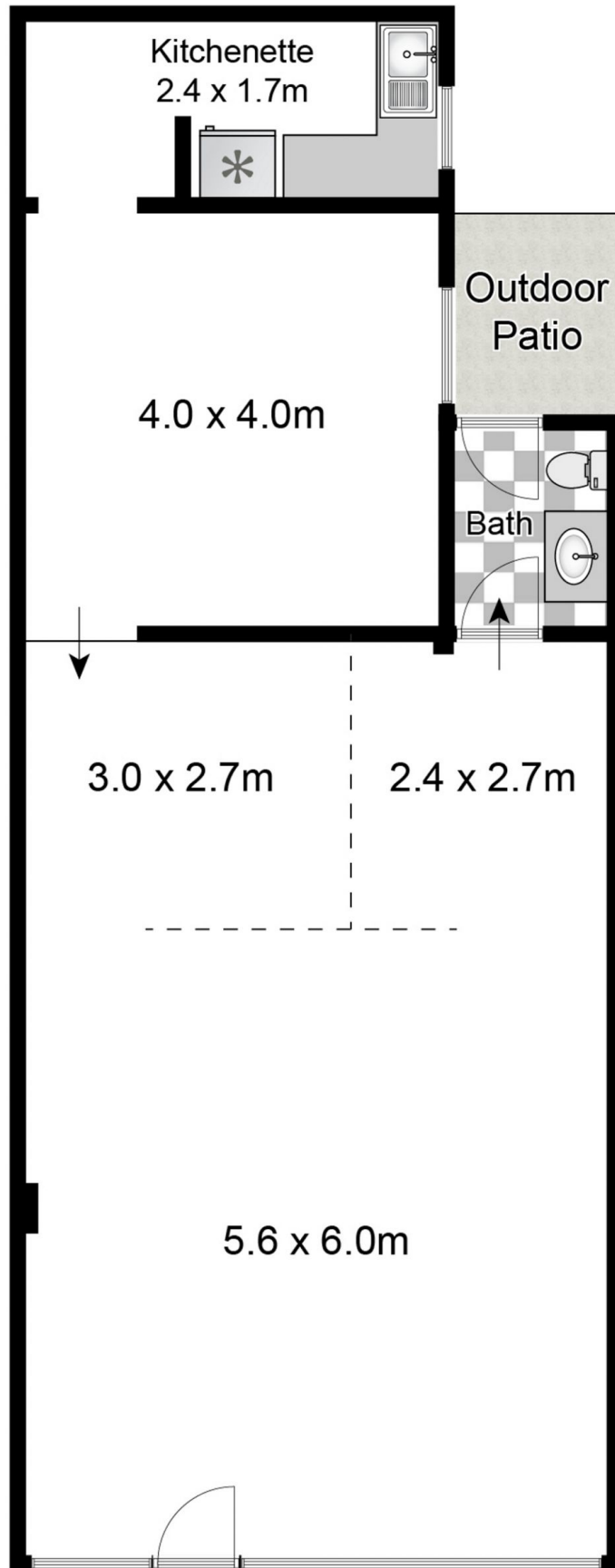
Located just 20m from the Courthouse door, the space would be ideal for a legal practice or any office or retail use.

Contact David Ryals on 0418 616 224 for price.

**Building Size** : 80 sqm  
**View** : <https://www.redproperty.com.au/lease/nsw/northern-beaches/manly/commercial/offices/7596466>



**David Ryals**  
02 9977 7533



Approx. Area: 80m<sup>2</sup>

Whilst [bwr.com.au](http://bwr.com.au) has made every attempt to ensure the accuracy of the floor plan contained here, measurements are approximate and no responsibility is taken for any error, omission, or mis-statement. This plan is for illustrative purposes only.

