



## B10, C9 &/1 Campbell Parade Manly Vale NSW

2 🚗

Situated in the highly regarded industrial complex of 'Manly Grove', the opportunity of these warehouses is endless for your business or potential tenants.

A secure investment that does not come up often, these warehouses cover 103-108m<sup>2</sup> of floor space plus mezzanine levels and are well equipped and close to all amenities and public transport.

Very unique opportunity to combine up to all 3 giving a huge 314m<sup>2</sup> with 6 car spaces.

Other features include:

- High clearance, roller door access 3.6m wide x 4m high
- 2 car spaces on title per lot
- Totaling 131-136m<sup>2</sup> on title
- Café on-site

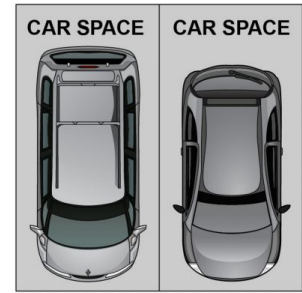
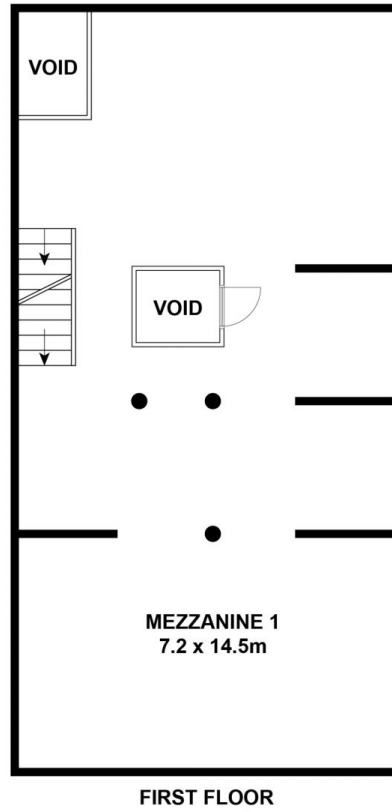
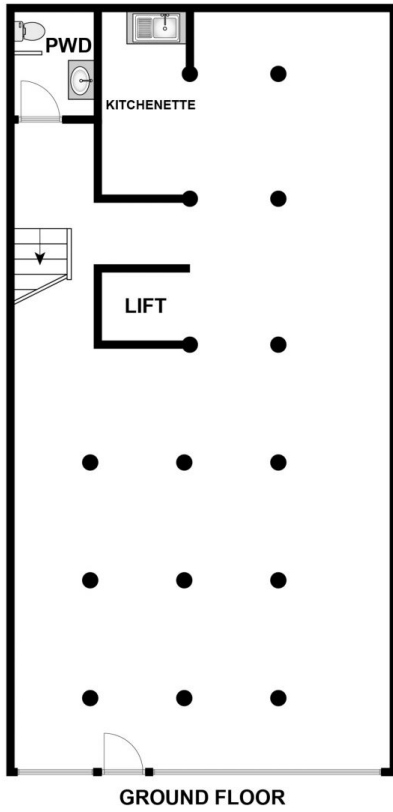
**Building Size** : 108 sqm  
**View** : <https://www.redproperty.com.au/sale/nsw/northern-beaches/manly-vale/commercial/industrial/7231968>



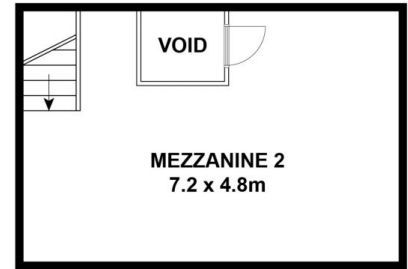
**Luke Newby**  
02 9917 4422



**Charli Sanders**  
9917 4405



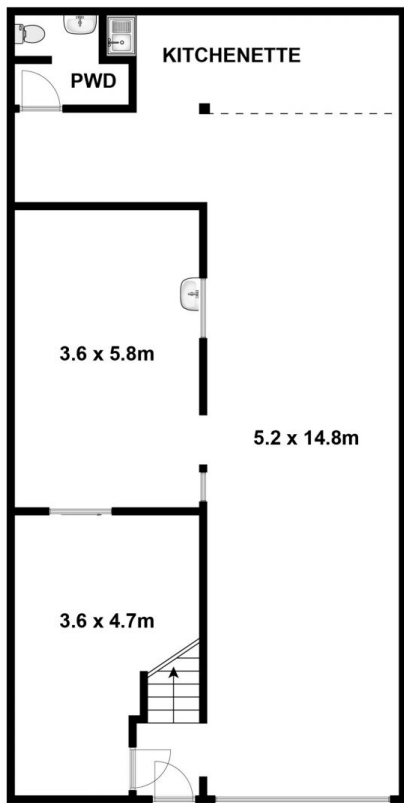
(NOT IN POSITION)



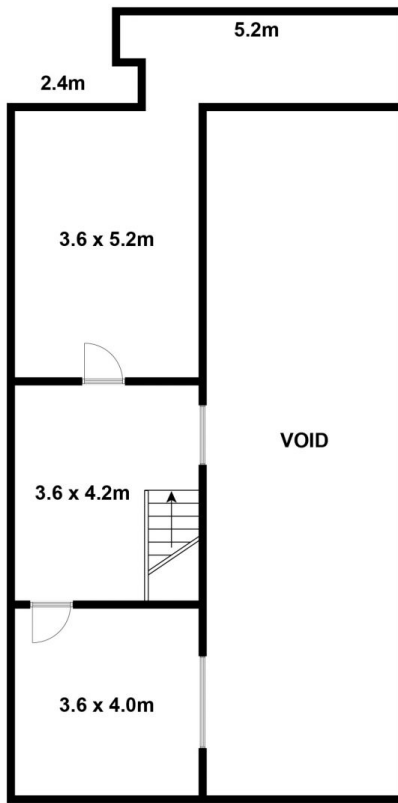
SECOND FLOOR

Whilst [bwrn.com.au](http://bwrn.com.au) has made every attempt to ensure the accuracy of the floor plan contained here, measurements are approximate and no responsibility is taken for any error, omission, or mis-statement. This plan is for illustrative purposes only.

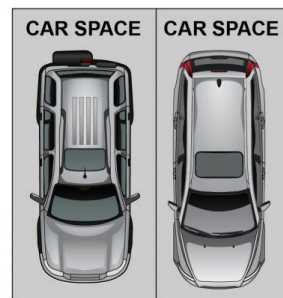
## B10/1 Campbell Parade, Manly Vale



**GROUND FLOOR**



**MEZZANINE**



**(NOT IN POSITION)**

Whilst [bwrn.com.au](http://bwrn.com.au) has made every attempt to ensure the accuracy of the floor plan contained here, measurements are approximate and no responsibility is taken for any error, omission, or mis-statement. This plan is for illustrative purposes only.

## **C9/1 Campbell Parade, Manly Vale**