



4 Belgrave Street Manly NSW

Just 100m to Manly Wharf with Parkland outlook and outdoor space.

This shop of approx. 80m² features a kitchenette and bathroom and a huge 6 metre window display.

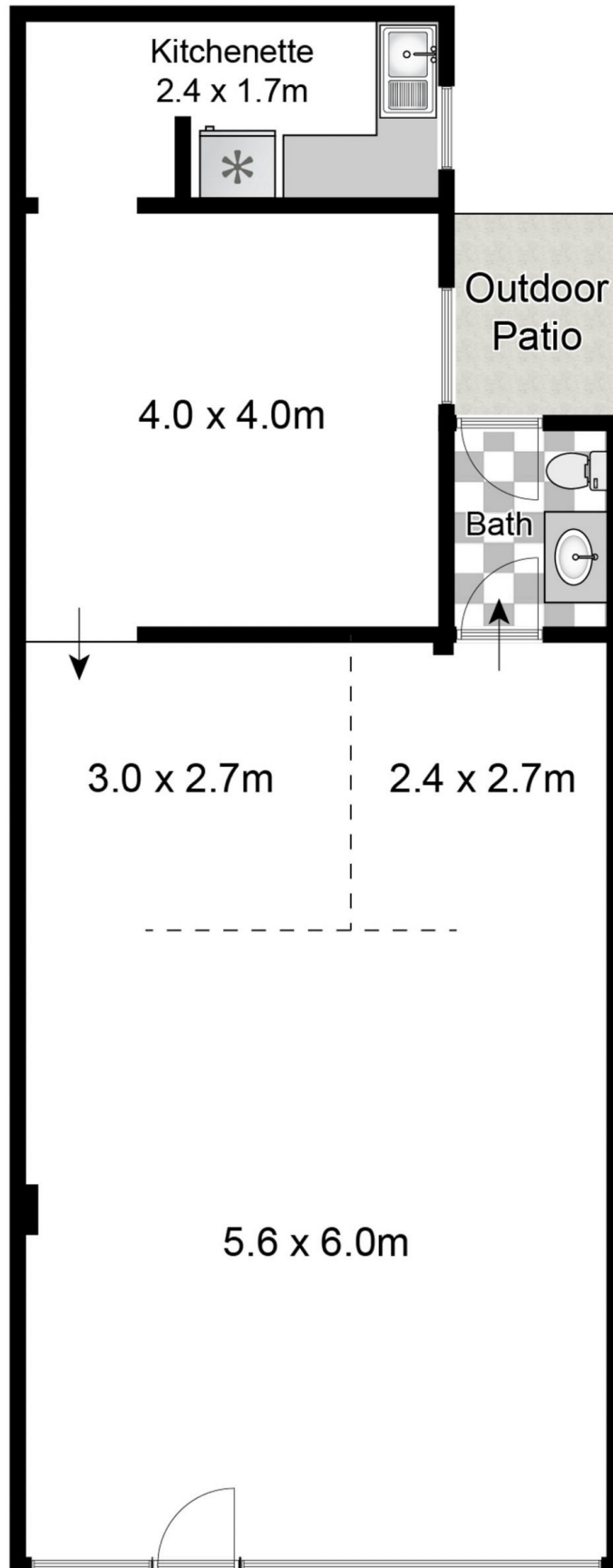
Located just 20m from the Courthouse door, the space would be ideal for a legal practice or any office or retail use.

Contact David Ryals on 0418 616 224 for price.

Building Size : 80 sqm
View : <https://www.redproperty.com.au/lease/nsw/northern-beaches/manly/commercial/offices/7182052>



David Ryals
02 9977 7533



Approx. Area: 80m²

Whilst bwr.com.au has made every attempt to ensure the accuracy of the floor plan contained here, measurements are approximate and no responsibility is taken for any error, omission, or mis-statement. This plan is for illustrative purposes only.

