



53 Epping Drive Frenchs Forest NSW

4 2 2

With an attractive street presence, this endearing single-level family home is nestled amidst gorgeous manicured gardens in a peaceful pocket of Frenchs Forest. A warming ambience of calm settles over each room in this much-loved home, where easy flow ensures seamless access to enclosed gardens and outdoor entertaining areas.

The spacious family room is a wonderful area for entertaining and spills out to the side veranda, providing a relaxing viewpoint over the enclosed lawns and gardens. A beautifully updated Miele kitchen complete with stone benches and glass splashbacks is at the centre of the home and is open to a good-sized dining area. Another living room flows off this ensuring the whole family has space to relax.

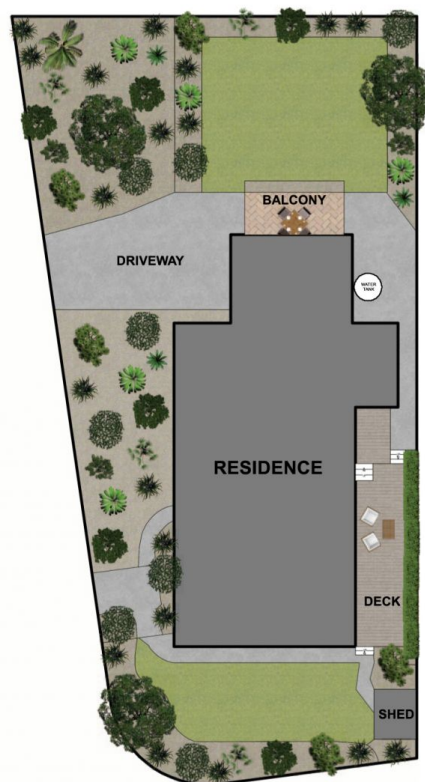
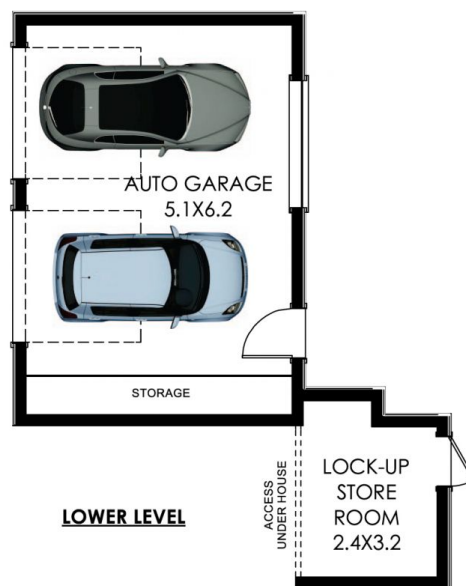
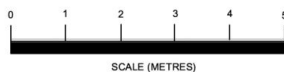
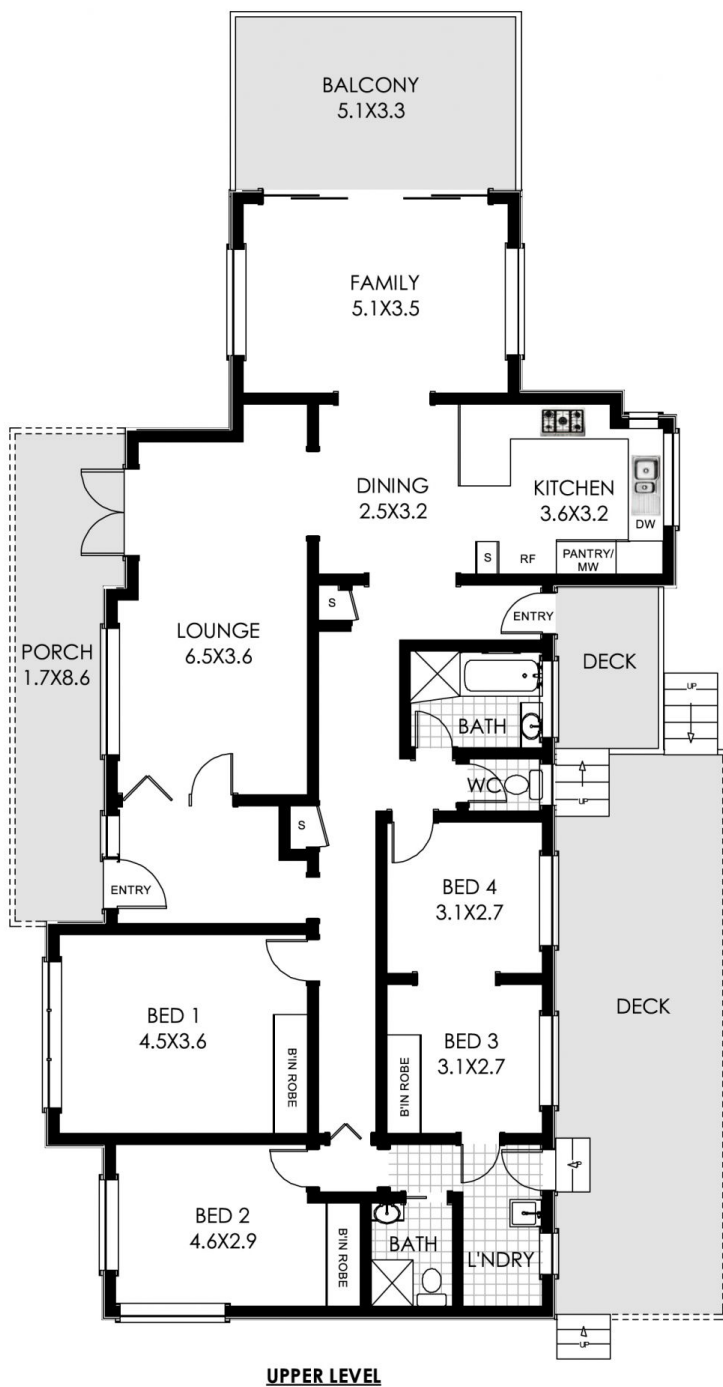
Well-appointed bedrooms offer a tranquil place to rest your

Price : \$ 1,450,000

View : <https://www.redproperty.com.au/sale/nsw/northern-beaches/frenchs-forest/residential/house/5949580>



Kerry-Anne Nielsen
0418 969 161



53 Epping Drive

FRENCHS FOREST

All information contained herein is gathered from sources we consider to be reliable. However we cannot guarantee or give any warranty about the information provided and interested parties must solely rely on their own enquiries. General Site plan is an indication only of the layout of the land and may not be completely accurate.