



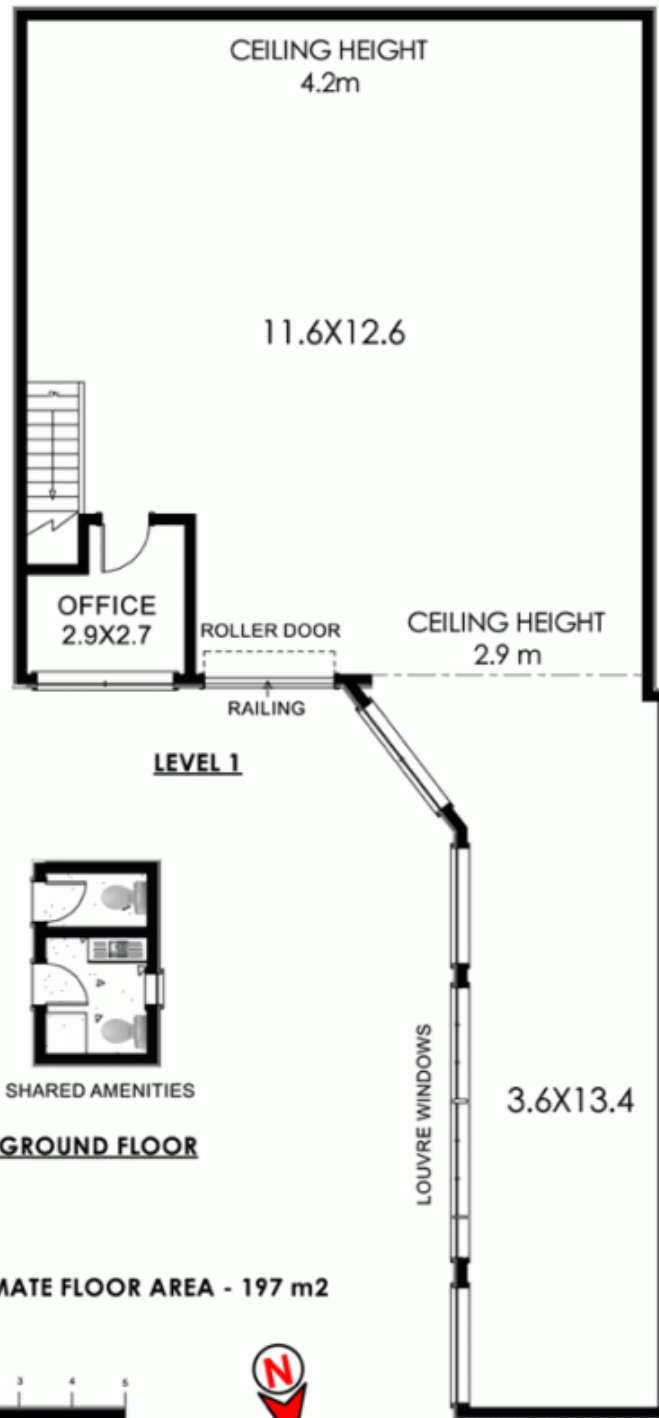
Area approx 195 sqm  
 Ranking Ceiling 2.9m - 4.2m  
 1st floor  
 Facing north - good sun  
 Older style suit storage  
 Timber floors  
 Central location in heart of Brookvale Industrial Area  
 \$395 pw + GST which is only \$107 p/smq gross and this is  
 the best value in Brookvale

Soon to be available 2 x spaces 95 -120 sqm  
 For more information contact Luke Newby 0404 898 409

**Building Size** : 195 sqm  
**View** : <https://www.redproperty.com.au/lease/nsw/northern-beaches/brookvale/commercial/industrial/5949453>



**Luke Newby**  
 02 9917 4422



**33 Chard Road**

**BROOKVALE**

All information contained herein is gathered from sources we consider to be reliable. However we cannot guarantee or give any warranty about the information provided and interested parties must solely rely on their own enquiries. General Site plan is an indication only of the layout of the land and may not be completely accurate.