



44 Idaline Street Collaroy Plateau NSW

4 3 4

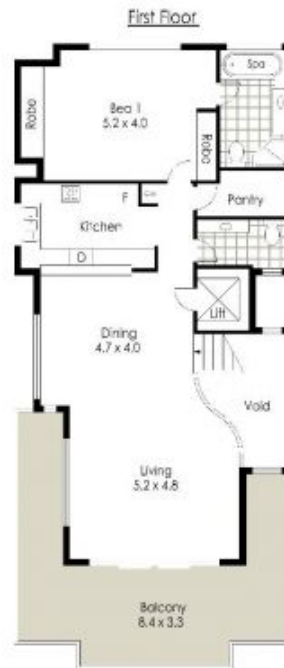
Architecturally designed and master built with tremendous style, 'Seacrest' is a full brick family residence and the very definition of relaxed peninsula living without compromise. Boasting superb ocean views, expansive entertaining options and a sweeping open plan layout, the home is a perfect choice for the changing needs of a growing family's lifestyle. Fresh and contemporary, it offers lounges on two levels, a gleaming CaesarStone/Smeg gas kitchen with enormous walk-in pantry, vast entertaining terrace overlooking the ocean plus two masters with chic, stone-finished ensuites. Set in the heart of the Plateau, it's a five-minute walk to bus transport, Collaroy Plateau Public School and your choice of cafes and eateries, while moments to both the lakes and beachfront.

? Expanses of glass flood the interiors with abundant natural light

Price : \$ 2,337,000
Land Size : 414 sqm
View : <https://www.redproperty.com.au/sale/nsw/northern-beaches/collaroy-plateau/residential/house/5948925>



Luke Newby
02 9917 4422



Site Plan (Scale Approximate)



*Internal area approx: 324 m²

All information contained herein is gathered from sources we consider to be reliable. However we cannot guarantee or give any warranty about the information provided and interested parties must solely rely on their own enquiries. General Site plan is an indication only of the layout of the land and may not be completely accurate.

44 Idaline Street, Collaroy Plateau



SCALE (METRES)